

# Engage Caregivers, Transform Behavior: Round Table Discussion

PRESENTED BY  
Licia Hillman, Kevin Summers  
& Brandy Samuell





## **Our Mission**

To help all students achieve their potential by partnering with school districts to provide quality teletherapy services and school-wide wellness solutions.

# Introductions

- **Licia Hillman, M.Ed.**
  - Former Principal, Berrendo Middle School, Roswell, NM
- **Kevin Summers, M. Ed.**
  - Superintendent, Bloomfield School District, Bloomfield, NM
- **Brandy Samuell, M. Ed.**
  - Director of Product, Related Services & Mental Health, eLuma Therapy

# Why Engagement & Accountability Matter

Student  
Success

Sense of  
Community

Positive  
Environment



# Foster Engagement & Accountability



# The Role of Parents

## Value Education

- Emphasize the importance of education at home.



## Partner with the School

- Collaborate with teachers and staff for the child's success.

## Prioritize Attendance

- Students must be present to learn and engage.



# The Importance of Attendance

## Track Attendance

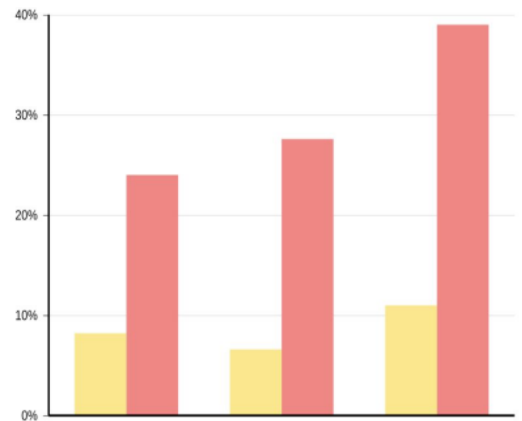
- Identify attendance issues early.

## Positive Communication

- Communicate with parents and families.
- Address attendance issues.

## Consistent Attendance

- Improves school connection.
- Increases engagement with learning.



# The Importance of Teamwork

## Collaborative Leadership

- VISIBILITY
- Regular classroom visits

## Unified Goals

- Ensure EVERYONE in the school community knows and understands the goals

## Standards Alignment

- Aligned curriculum
- Teacher collaboration
- Positive accountability
- High expectations



# Lead for Change



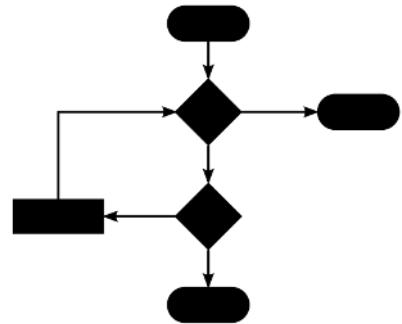
# Making Goals Visible and Accessible

## Involve teachers, students, and parents

- Build and understand the school's vision and objectives

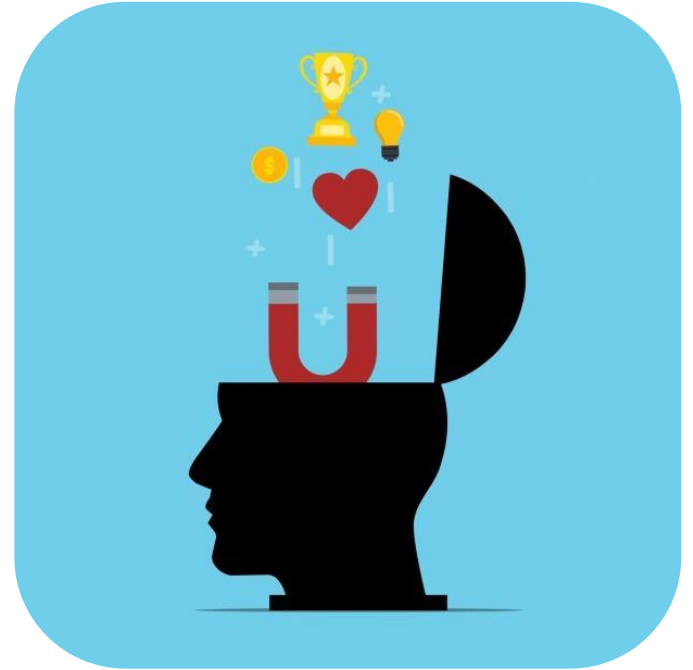
## Communicate goals

- Regular communication in newsletter, displays, and meetings



# Model Change

1. **Lead by Example**
2. **Encourage a Growth Mindset**
3. **Track Progress**
4. **Make Adjustments**



# Engaging Students

## Active Learning

- I do, We do, You do
- Teacher as facilitator
- Encourage discussion and debate

## Purposeful Learning

- Communicate learning goals and outcomes to students
- Make learning relevant
  - Real world examples
  - Student interests
- Help students understand what they are learning
- Help students understand why they are learning



**It Takes a Village**



# Working Together for Student Success

## Track Attendance

- Identify attendance issues early.

## Positive Communication

- Communicate with parents and families.
- Address attendance issues.

## Consistent Attendance

- Improves school connection.
- Increases engagement with learning.



# Services Appendix



# eLuma: Climate and Culture Support

- **Consultative Services**
  - Needs Assessment/Resource Mapping
  - MTSS Development
- **Universal Mental Health Screener**
- **Universal Social Skills Instruction**
  - Synchronous
  - Asynchronous
- **Professional Development**
  - Staff Support & Wellness
- **Caregiver Training**
- **Individual Counseling**
- **Small Group Counseling**
- **Behavior Support**
- **FTE Staffing**
  - School Psychologist
  - School Counselor
  - School Social Worker

# Love what you do!



Visit [eluma.com](https://eluma.com)  
to learn more.

**More questions? Contact me:**  
Brandy Samuell | [bsamuell@elumatherapy.com](mailto:bsamuell@elumatherapy.com)

